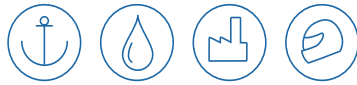


ELWA

Preheater KVEc

The compact engine preheater



ELWA Elektro-Wärme GmbH & Co. KG

Frauenstraße 26
D-82216 Maisach

tel +49-8141-22866-0
fax +49-8141-22866-10

email sales@elwa.com
web www.elwa.com

Description



The ultracompact KVEc heaters offer highly effective heating power for processes with water or similar media. Important development targets were minimised footprint and perfect cost control without compromise on quality and reliability and serviceability.

Design

The KVEc series is based on our renowned KVE series. We use high-quality centrifugal pumps (wet runners and dry runners). All components can be exchanged with standard tools.

Electrics

Due to the flexible design, the units can be adapted to any operating voltage between 230 VAC and 690 VAC. The compact dimensions require external installation of the main fuses.

Operating pressure

10 bar in standard design/16 bar in HP design

Operating temperature

Max. 95/100 °C

Heat transfer

Due to the perfect hydraulic flow around the heating elements, the medium is gently heated to the specified temperature. The surface load (W/cm^2) is approximately $8 W/cm^2$.

Material

All components in contact with the medium can be made of material suited to the application. By standard and with short delivery times: P265GH (mild steel) and 1.4571 (stainless steel). Other materials are available on request.

Controls (ELWA)

The compact control box contains contactor for the heater, transformer and fuses for the pump and the temperature controller and temperature safety limiter. The basic version is designed for remote operation without local switches and indicators.

Options

- > electronic temperature controller (with display)
- > safety valve
- > non-return valve
- > local operation with switch and indicator lamp
- > coupled dry runner pump
- > thermal insulation (softshell)

Typical applications

The series KVEc heaters are the perfect choice for preheating the cooling water circuits of small and mid-sized diesel engines. Further possible areas of application: Heat source for industrial processes/building heating (booster/legionella cycle).

Safety

All units are equipped with built in safety temperature limiters (STB). Optional additional safety device: safety valves.

Thermal insulation

Optional softshell insulation.

Painting

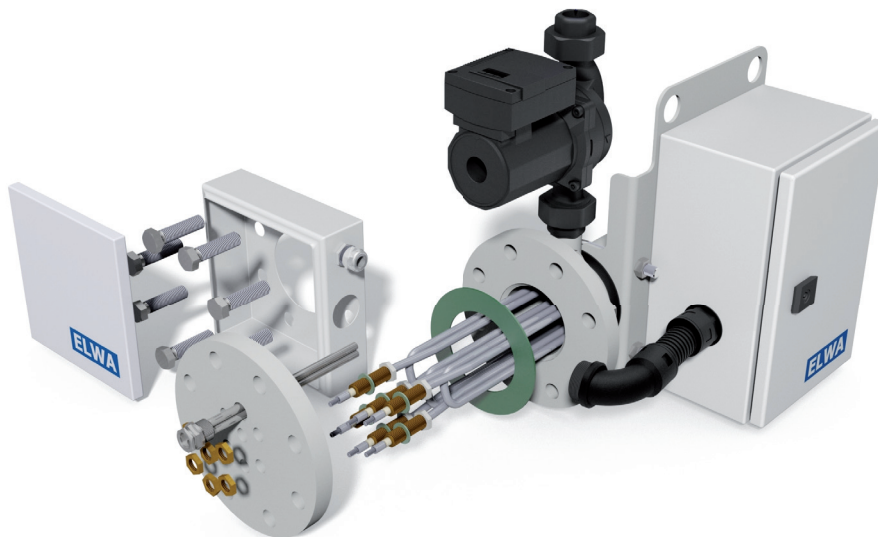
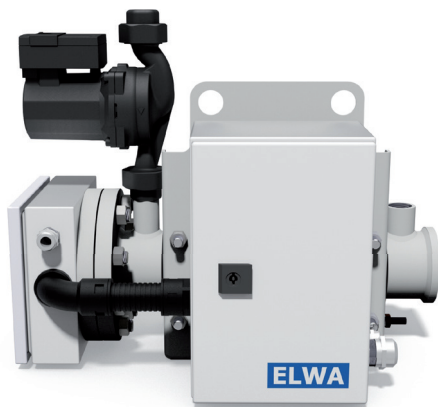
Heavy duty industrial painting with 2K structured PUR paint

Process connections

Standard: threaded connection 1" (inner thread)

Classifications

ABS, BV, DNV, CCS, GL, LRS, RINA, MRS, others on request

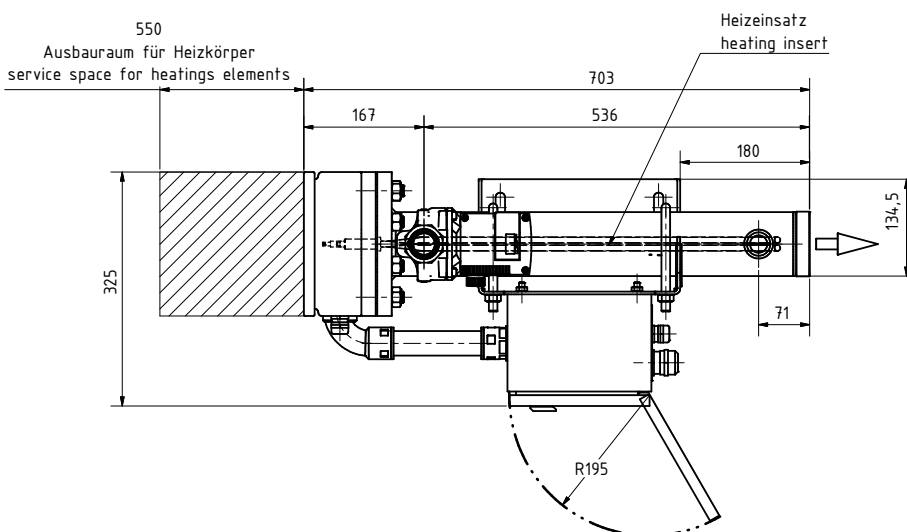
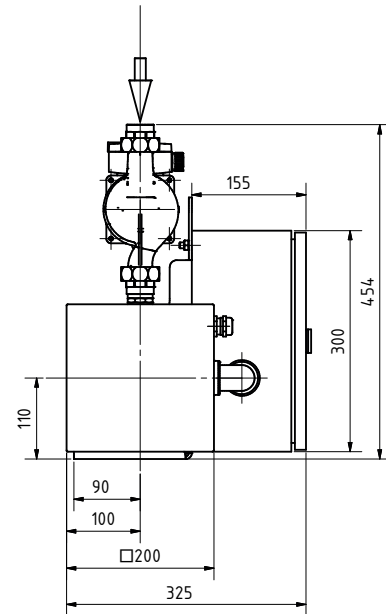
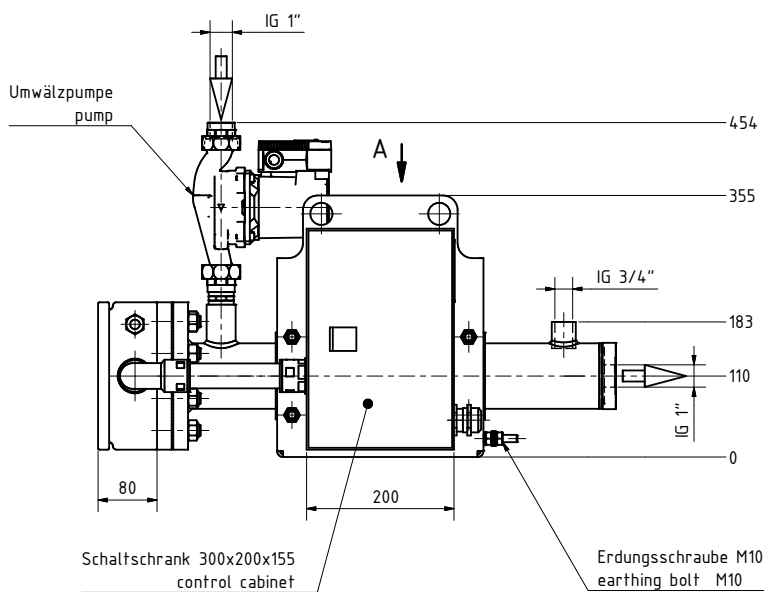




Overview table

Type	power/operating voltage	Ph.
KVEc-3	2,5 kW @ 230 V ...3 kW @ 240 V	1
KVEc-5	3,1 kW @ 400 V ...4,5 kW @ 480 V	3
KVEc-9	6,3 kW @ 400 V ...9,0 kW @ 480 V	3
KVEc-13	9,0 kW @ 400 V ...12,9 kW @ 480 V	3
KVEc-15	12,1 kW @ 400 V ...14,7 kW @ 480 V	3

technical data	
pump	2 m³/h @ 3 mWs
operating pressure	Max 6 bar
protection class	IP 56 (IEC 60529)



Please note that technical data, dimension and equipment may vary.

Service Hotline

+ 49 (0) 8141 – 22866-980

